

NORTHUMBERLAND, PA.
Showing a Birdseye View of the Town Proper.

NORTHUMBERLAND

A TOWN OF DEVELOPMENT & OPPORTUNITY



HIS BOOKLET is issued by the Bureau of Industry, composed of citizens of Northumberland, Pennsylvania, who take a great and natural pride in extolling her splendid advantages.

¶ We desire through the pages of this Booklet to show Northumberland to the industrial and business world in all her advantages of beautiful scenery, healthful climate, pure water, fine natural drainage, modern improvements, recognized schools, adequate fire protection, best of manufacturing sites, unsurpassed shipping facilities and ready and willing labor.

¶ To manufacturers desiring a change of location, as well as to newly organized industries seeking a location, a cordial invitation and a hearty welcome to investigate our resources are hereby extended.

1910

THE TOWN

Its Location, General Features and Improvements



ORTHUMBERLAND comprises an area of one square mile and has a population of quite 3,500. It is splendidly situated on the highlands formed at the junction of the North and West Branches of the Susquehanna River. The lovely shaded town, and the beautiful mountain scenery, silvery waters, and green and fertile farmlands surrounding, as seen from Shikellimy Heights right opposite the town, form a panoramic view of beautiful coloring and pleasant aspect.

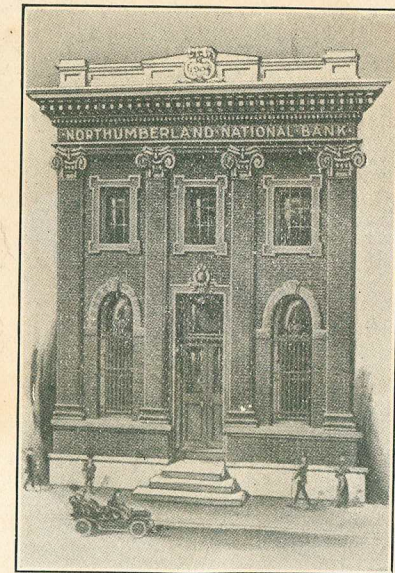
The river is spanned by two great iron bridges, the Pennsylvania Railroad and free county bridges, on the North Branch, and by a free county bridge on the West Branch.

The electric arc system of illumination is used in the town. Other features are its pure mountain water supply, splendid sewage, good streets, an electric car line and a sound banking institution. Its churches and schools are of a high standard of excellence.

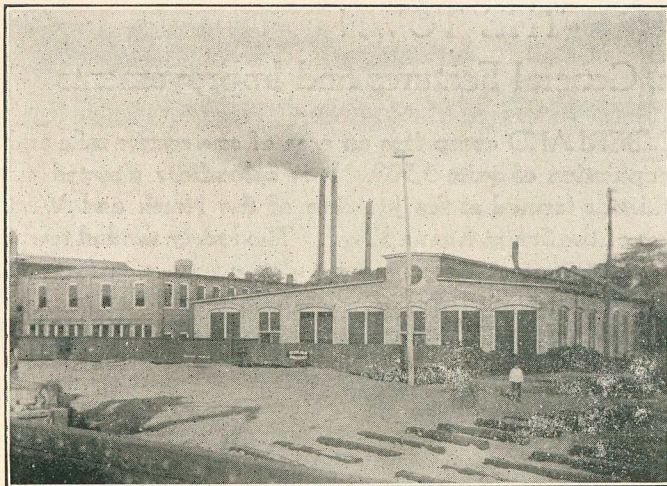
The splendid advantages of the town are being recognized and it is fast becoming a manufacturing and distributing center of repute. Here are located the Keystone Forge Works, the largest of its kind in the country, a large nail mill, a hat and cap factory and a manufacturing pharmacy of wide reputation. An excellent grade of sand is dug from the West Branch and affords one of the town's small industries. One of the town's latest acquisitions is a modern equipped planing mill. There are two bottling works in the town.

The famous Tuckahoe Lithia Springs are located just outside the town, their waters having a wide reputation as a specific in the treatment of uric acid diathesis, gout and rheumatism. The Sulphur Springs on the same tract are also valuable medicinally.

Northumberland is receiving special attention from the outside world at this time owing to the fact that the Pennsylvania Railroad Company is now engaged in the construction of four million dollar classification freight yards at this point, which will contain many miles of tracks, with the necessary round houses, shops and offices. These yards will be the fifth largest in the United States. The prospects are that Northumberland will soon be a railroad center of considerable importance.



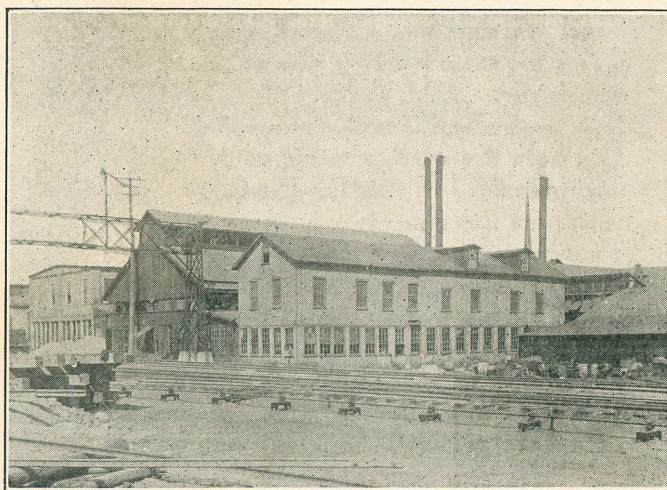
The Northumberland National Bank



*The
Keystone
Forging
Works*

SHIPPING FACILITIES

A GLANCE at the map will show that Northumberland is a trifle east of the center of the State and in proximity to the great markets. No town within a radius of many miles has better shipping facilities. Situated on three great railroad lines, the manufacturer can load his finished product with the assurance that but a few hours will elapse until his shipment will arrive at its destination, either to the seaboard or the interior, with no aggravating delays caused by complex and dilatory transfer systems. The choice of through service means quick delivery, satisfied customers and increased sales. Our unrivaled shipping facilities and proximity to the anthracite and bituminous coal fields are two important features for consideration.



*The
Van Alen
Nail Mill
&
Keystone
Forging
Works.*

(4)

THE WATER

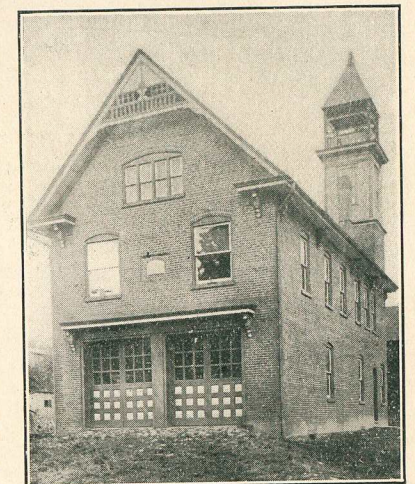
IN THE excellence, freedom from contaminating germs and consequent purity of her city water Northumberland is without a peer. Its source is in the Tuckahoe Lithia belt, which speaks volumes for its purity and healthfulness. The supply is obtained from the celebrated Mine Spring at the base of Montour Ridge, seven miles from the town. The height of the spring renders pumping unnecessary and a guaranteed gravity pressure of sixty pounds to the square inch for fire purposes is maintained at all times. This, together with an efficient volunteer fire department, assures adequate fire protection.

SEWAGE

Owing to the rolling contour of the land, together with its elevation, Northumberland has the great advantage of natural drainage, thereby eliminating all trouble arising from the necessary disposal of surface water, the accumulation of which endangers the public health of so many communities, fosters swampy ground, and renders impossible the erection of buildings for manufacturing purposes, without the elaborate and costly preparations for foundations.

In addition the Borough owns, free of all incumbrance, a splendid sewage system sufficient for the needs of a much larger town for years to come. Cesspools, stagnant disease breeding waters and excessively swampy grounds are conditions unknown to Northumberland.

As far as floods are concerned the town is exempt from them, her elevation placing her above the flood line. When other towns along the Susquehanna have been inundated by high water Northumberland has been unaffected. A strong point in favor of the town as a location for industries.



The Town Hall

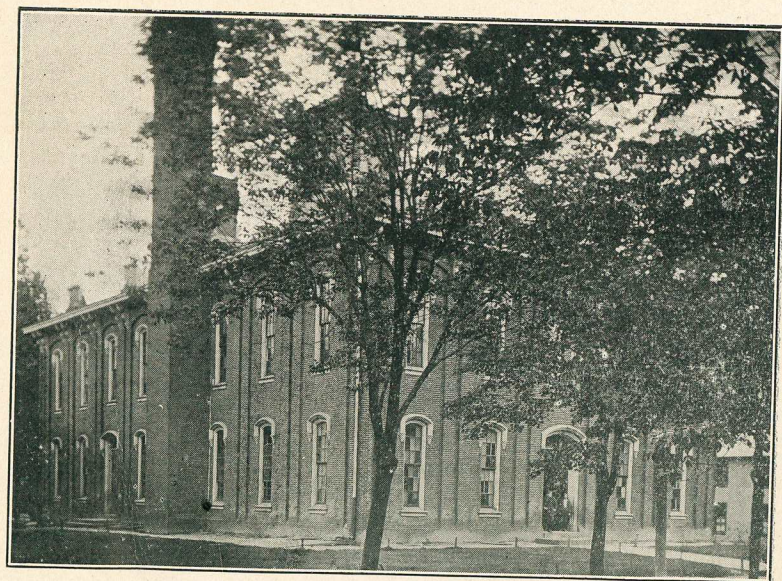


Wenck's Pharmacy

(5)



Market Square

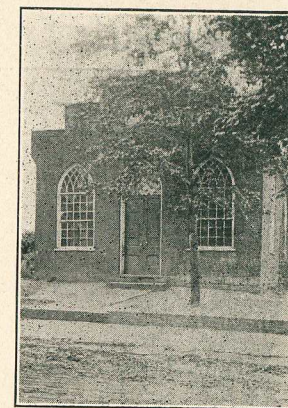


Public School Building

THE PUBLIC SCHOOLS

OUR PUBLIC Schools are among the best in the State for a town of our size and we proudly boast of them. Graduates of the Schools without any other preparation have entered a number of the best colleges as Freshmen, and others, by taking a two years' course at a Normal School, have graduated from Colleges and Universities with high honors. The Schools, however, are not given over to the preparation of students for higher institutions of learning; much attention is given to the well-rounded education of that majority of students who do not go farther than the High School.

The Schools consist of a carefully graded twelve-year course, including a four-year High School course. The High School is of the first class and offers both a Commercial and a Classical Course. The former requires Stenography, Type-writing, Commercial Law, Economics, Commercial History and Geography, Office Practice and Book-keeping; also an extra drill in Business English, Arithmetic and Spelling. The latter requires First Year Latin, Caesar, Cicero and Virgil, First and Second Year German, Algebra, Rhetoric, Ancient, Roman, Greek, English and Modern History, Physics, Botany, Geology, Zoology, Physical Geography. The required Classics for College entrance are also given a critical study. The Primary, Intermediate and Grammar Grades



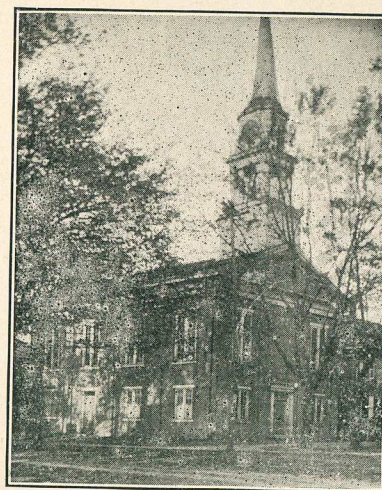
Old Unitarian Church

are well equipped with the proper facilities for the education of the children at their various stages.

Athletics receive careful attention. All students are required to show a creditable class standing before they are allowed to qualify for any of the athletic teams. A High School Orchestra gives an excellent opportunity for the development of musical ability.

The High School Library of the best works of standard authors and carefully selected works of reference is one of the best to be found in a town of our size.

The Schools are managed by six directors and a Principal and fourteen teachers constitute the faculty.



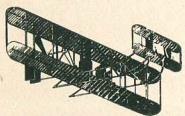
The M. E. Church



BIRDSEYE VIEW OF THE NEW CLASSIFICATION FREIGHT YARDS OF THE
PENNSYLVANIA RAILROAD COMPANY



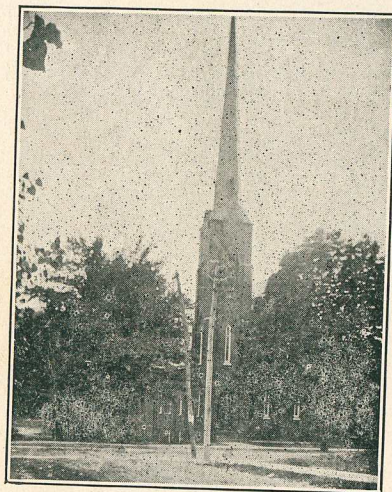
Now in Course of Construction at Northumberland and Contributing in a Large Measure
to the Development of the Town



HISTORICAL SKETCH

AS EARLY as 1701 James LaPort, a French Indian trader, had a cabin on the point of land formed by the two branches of the Susquehanna River at Northumberland. But so far as known Robert Martin was the first permanent settler, having erected a pretentious log house in 1768, which in the following year he turned into a tavern or inn. This finally became, through the great possibilities of the new century, a favorite rendezvous for speculators, pioneers and surveyors, since it was the only house within a radius of many miles, except the enclosure of Fort Augusta.

Northumberland was laid out in town lots January 20, 1781, but made slow progress during the Revolutionary War, when, owing to Indian and British atrocities, all the inhabitants were compelled to seek refuge in Fort Augusta. It was reoccupied in 1785, and ten years later contained about one hundred houses. Hither in 1794 came the great expatriated scientist and writer, Dr. Joseph Priestley, to seek freedom and comfort, but even before his advent Northumberland was noted as the residence of such men as Colonel F. R. Antes, of Revolutionary fame; Andrew Kennedy, newspaper publisher and subsequently publisher of a number of Priestley's Works; John Cowden, first postmaster of Northumberland and in Northumberland county; Thomas Cooper, Judge of the Northumberland county courts and the author of "Cooper's Political Economy," and many others prominent in the Indian and Revolutionary Wars, and the political and social life of the country.

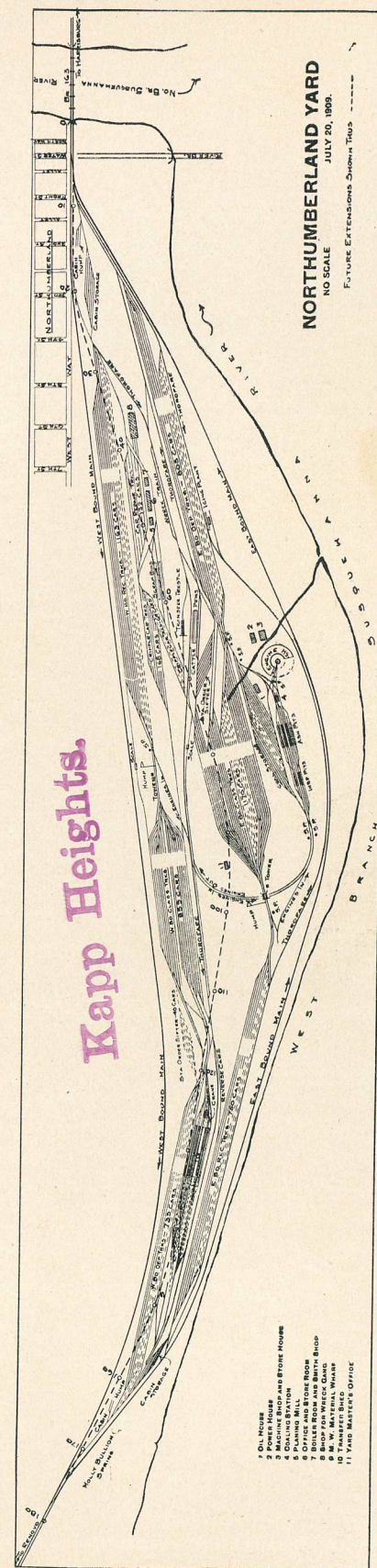


First Baptist Church

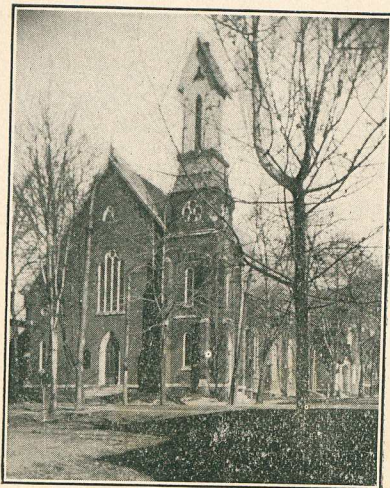
Northumberland enjoyed a long period of unusual growth and prosperity through the great channel of industry, the canals. Her boatyards resounded with the noise of the hammer, saw and calker's tools. Her boats were known wherever the canal-shipping business was conducted. Her banking papers were recognized and accepted in the cities when hundreds were rejected as unsafe. Her boatmen were prosperous, her merchants wealthy, and the farmer and laborer enjoyed unusual advantages.

With the passing of the canals as a means of transportation Northumberland lost most of her prestige, but with her natural advantages of location, freedom from floods, and three great lines of railroad--the Pennsylvania, D. L. and W., and the Philadelphia and Reading--the town is rapidly forging ahead as an industrial center.

DIAGRAM OF THE NEW NORTHUMBERLAND YARD OF THE PENNSYLVANIA RAILROAD COMPANY



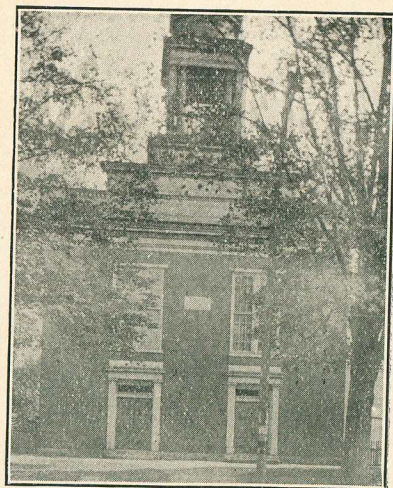
The above diagram gives a very good idea of the Northumberland Yard as it will be when completed. It was reproduced by Grit Publishing Company of Williamsport, Pa., from the Railroad Company's blue-print, and the cut is printed in this Book-let by courtesy of Grit. The Yard will be about three miles long, extending from the Northumberland station westward to Kapps Station right along the West Branch. Its greatest width will be nearly half a mile. As is indicated on the diagram the Yard will have all the modern facilities.



St. John's Lutheran Church



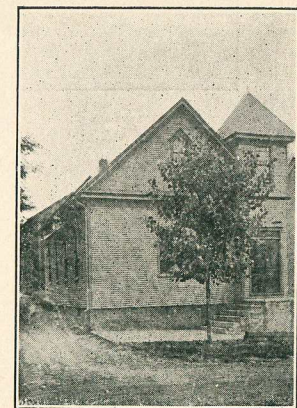
St. Mark's Episcopal Church



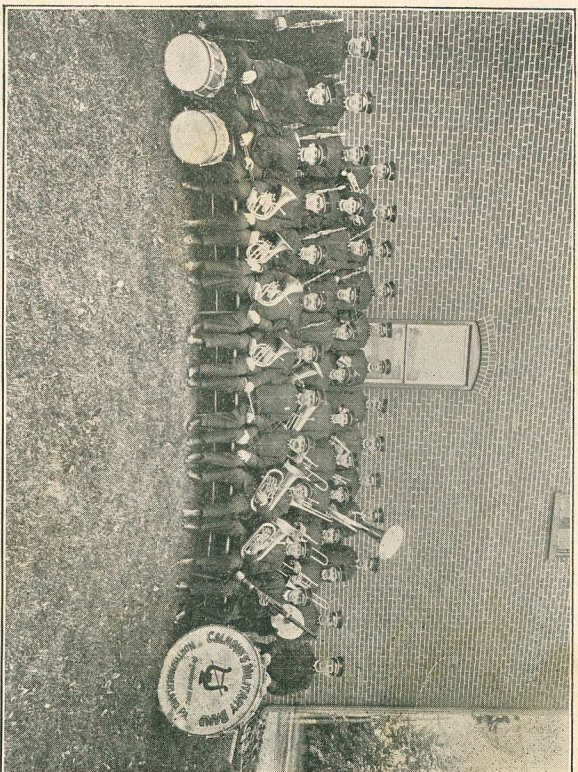
First Presbyterian Church

Our Boast

- | | |
|--------------------------------|--|
| 1 National Bank | 4 Coal Dealers |
| 1 Newspaper | 1 Lumber Dealer |
| 7 Churches | 5 Real Estate Agencies |
| 1 Large Modern School Building | 8 Insurance Agencies |
| 3 Railroads | A Modern Equipped Post Office |
| 1 Trolley Line | 2 Rural Mail Routes |
| 2 Telegraph Lines | 3 Hotels |
| 2 Telephone Lines | 3 Restaurants |
| 38 Passenger Trains Daily | 1 Fire Hose Company |
| 2 Express Companies | 1 Hook and Ladder Company |
| 1 Iron Works | 1 Military Band of 40 Pieces |
| 1 Nail Factory | A Ladies' Civic Club |
| 1 Forging Works | A Bureau of Industry |
| 1 Hat and Cap Factory | 1 Large Masonic Lodge |
| 1 Steam Laundry | 1 Large Odd Fellows' Lodge |
| 2 Bottling Works | 1 G. A. R. Post |
| 1 Wholesale Pharmacy | 1 Sons of Veterans Camp |
| 1 Sand-Digging Industry | 1 Camp of Modern Woodmen of America |
| 1 Planing Mill | 1 P. O. S. of A. Camp |
| 3 Lawyers | 1 Rebekah Lodge |
| 6 Physicians | 1 B. of R. T. Lodge and Ladies' Auxilliary |
| 3 Dentists | 1 Knights of Pythias Lodge |
| 5 Active Clergymen | |
| 12 General Stores | |
| 5 Meat Markets | |
| 1 Jewelry Store | |
| 3 Drug Stores | |
| 2 Electrical Supply Stores | |
| 1 General Hardware Store | |
| 2 Five and Ten Cent Stores | |
| 2 Tailoring Shops | |
| 2 Tin Shops | |
| 1 Plumbing Establishment | |
| 3 Tobacco Stores | |
| 2 Confectionery Stores | |
| 5 Barber Shops | |
| 2 Bakeries | |
| 3 Millinery Stores | |
| 4 Clothing Stores | |
| 4 Ice Dealers | |
| 6 Milk Dealers | |



Seventh Day Adventist Church



CALHOUN'S MILITARY BAND
For Which Northumberland is Noted.